

ANEMONE SSALL71709



misaharada  
london

*Underwater Love*  
spring/summer 2017



misaharada  
london

*Underwater Love*  
**spring/summer 2017**

Misa's Spring/Summer 2017 collection looks beneath the waves to offer a fresh perspective on the sea and underwater life.

The collection brings together beautifully woven panamas, sisals and ramie straws in a variety of colours, from sandy shades to deep blue hues. Embellishments of beads and stones, hand cut sequin flowers, bird of paradise applique and Liberty printed bow ties are inspired by coral reefs and echo the essence of the sea.

The shapes found in this collection range from the classic to the bold and dramatic. Misa's aqua sinamay 'Freights' headpiece is uniquely shaped to create the illusion of waves and capture the drama of the ocean.

This season includes a unique collaborative collection of panama hats hand painted by artist Keeda Oikawa, which are beautifully crafted for the true individual.

**BRAND PROFILE**

Misa Harada trained at The Royal College of Art in the mid 1990's and then began an apprenticeship under the watchful eye of Royal appointed milliner Frederick Fox.

In 1998 Misa Harada launched her own label at Paris Fashion Week and her quirky yet elegant designs quickly became well known within fashion and millinery circles.

Misa's use of traditional millinery and unique style has been championed by former collaborators Katharine Hamnett, Thierry Mugler and Yohji Yamamoto. In November 2015, Misa's retrospective exhibition titled "Hats off" was held at Pola museum in Tokyo.

As well as regularly featuring in International fashion publications, Misa has designed hats and head pieces for celebrities that include The Scissor Sisters, The Rolling Stones, Mickey Rourke and Jennifer Aniston.

Today Misa Harada's women's and men's collections are sold in over 120 retail outlets across fifteen countries.

FREIGHTS SSALL71708



## SS17 ALLURE COLLECTION



**DORY SSALL71707**

Beret in royal blue sinamay, decorated with scattered coral reef embroidery



**DORY SSALL71707**

Beret in black sinamay, decorated with scattered coral reef embroidery



**FREIGHTS SSALL71708**

Wavy disc headdress in aqua sinamay, scattered with curled sequin flowers



**ANEMONE SSALL71709**

Royal blue coral headdress in frayed crinoline, fluorescent tip in orange and yellow, scattered goose feathers



**SIREN SSALL71710**

Heart shaped headdress in black sinamay and crinoline, silk satin bows finished with arrowhead quill



**MUIR SSALL71711**

Miniature trilby in dark navy sinamay and black crinoline, with an ecliptic of gold pearls



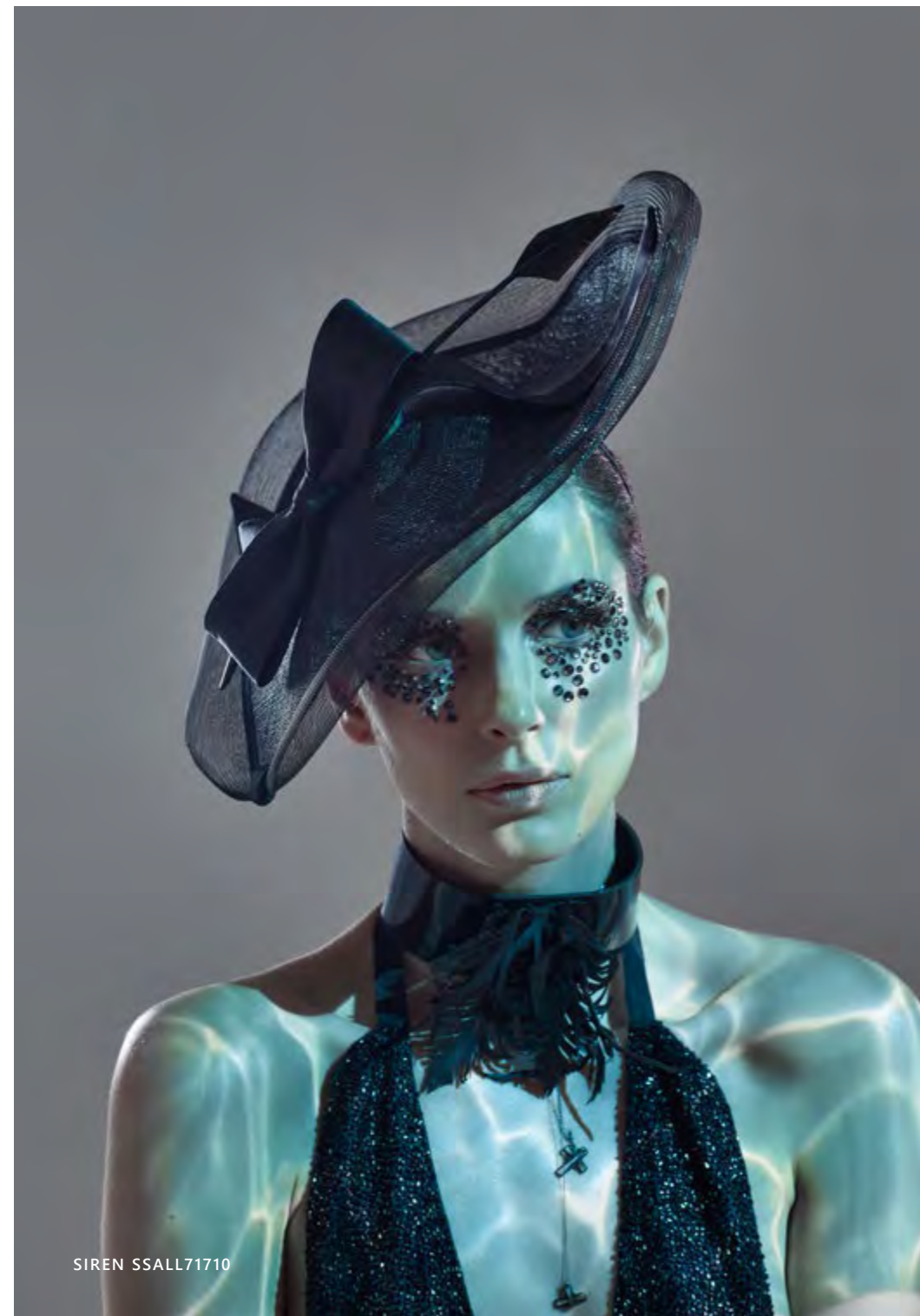
**MIRA SSALL71712**

Miniature coolie in knotted sisal, with black silk satin bow and spotted veil



**THAMES SSALL71713**

Miniature trilby in black sinamay, with frayed grosgrain ribbons, embroidered with pearls and spotted veil



**SIREN SSALL71710**

## SS17 LADIES LUX COLLECTION



BROOK SSLUX71721



**HALEY SSLUX71720**

Wide brimmed fedora in sea green ramié straw, decorated with a sequin applique of bird of paradise



**BROOK SSLUX71721**

Wide brimmed fedora in natural wicker sisal, draped in honeycomb veiling and sequin flowers



**JENNIFER SSLUX717122**

Wide brimmed fedora in knotted sisal, decorated with coral reef embroidery



**SOFIA SSLUX71723**

Wide brimmed fedora in grey ramié straw, scattered with curled sequin flowers



**LAKE SSLUX71724**

Fedora in tan panama, draped in French lace



**RANA SSLUX71725**

Fedora in grey panama, with a cascading crystal feather chain



**SANDY SSLUX71726**

Wide brimmed cloche in natural wicker sisal, draped in French lace



**CASCADE SSLUX71727**

Wide brimmed cloche in black wicker sisal, scattered with curled sequin flowers



**CORAL SSLUX71728**

Tall fedora in black fishnet straw, decorated with a beaded applique of fleur de mars





**FELICITY SSLUX71729**  
Tall fedora in white panama, decorated with coral reef embroidery



**FRANCOISE SSLUX71730**  
Tall fedora in natural jute straw, with grosgrain ribbon and embellished with spotted veil



**BAY SSLUX71731**  
Tall fedora in grey ramie straw, draped in French lace and veiling



**MISTY SSLUX71732**  
Wide brimmed boater in natural wicker sisal, with sequin applique of bird of paradise



**MISTY SSLUX71732**  
Wide brimmed boater in black wicker sisal, with sequin applique of bird of paradise



**OCEANE SSLUX71733**  
Asymmetric fedora in sea green ramie straw, wrapped with a frayed denim grosgrain ribbon and honeycomb veil



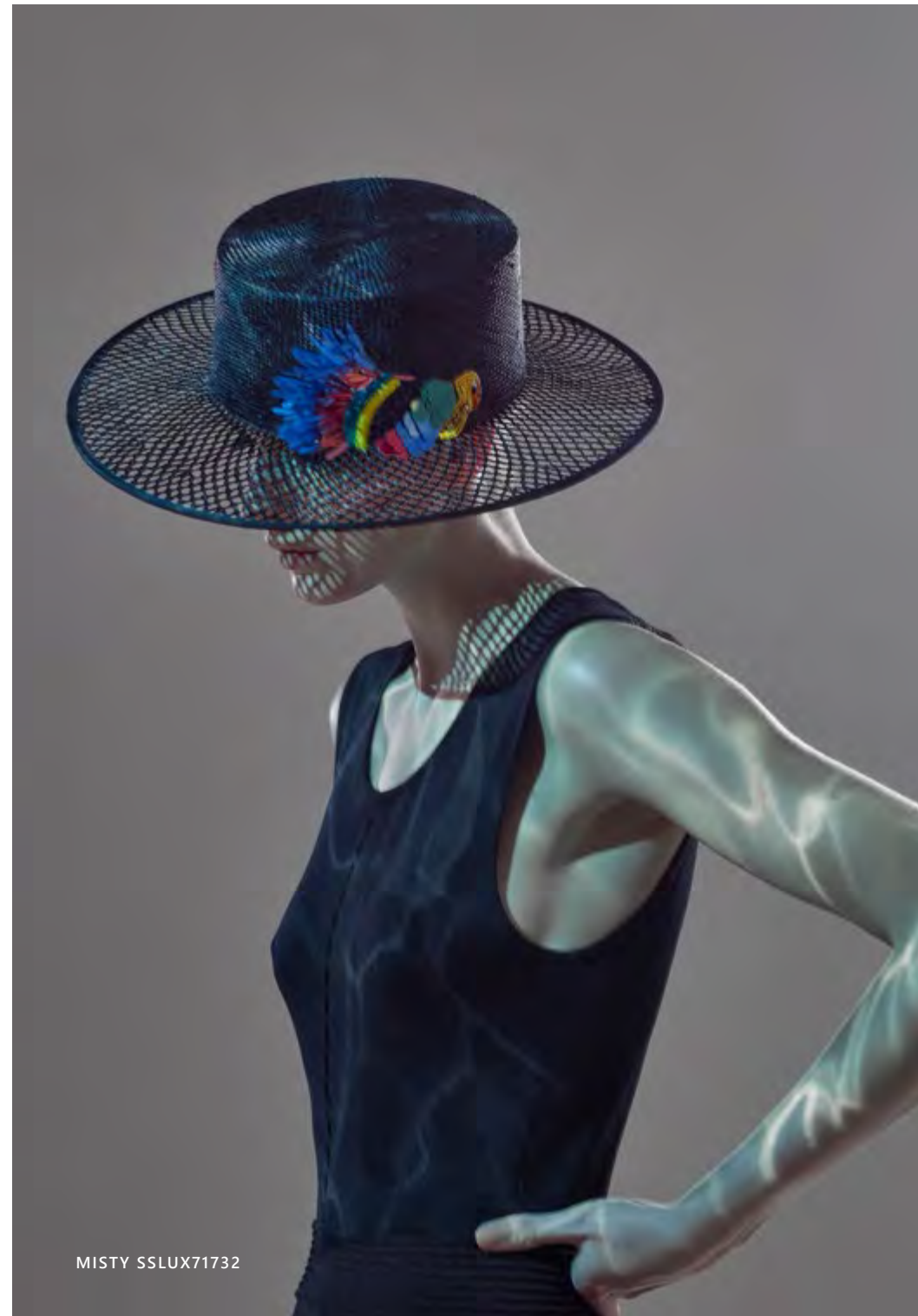
**MARINA SSLUX71734**  
Boater in black fishnet straw, wrapped with a frayed grosgrain ribbon and spotted veil



**MARINA SSLUX71734**  
Boater in natural fishnet straw, wrapped with a frayed grosgrain ribbon and honeycomb veil



**KYLA SSLUX71735**  
Boater in natural fishnet straw, draped in French lace and veiling



**MISTY SSLUX71732**



**MARINA SSLUX71734**



**RIVA SSLUX71736**

Boater in sea green ramie straw, scattered with curled sequin flowers



**LOIRE SSLUX71737**

Boater in black wicker sisal, decorated with a beaded applique of fleur de mars



**LIANNE SSLUX71738**

Asymmetric fedora in natural ramie straw, scattered with curled sequin flowers



**SANDRA SSLUX71739**

Asymmetric fedora in tan panama, decorated with a beaded applique of fleur de mars



**WAVERLY SSLUX71740**

Floppy wide brimmed fedora in white panama, decorated with a sequin applique of bird of paradise



**NERIDA SSLUX71741**

Floppy wide brimmed fedora in tan panama, decorated with coral reef embroidery



## SS17 UNISEX COLLECTION



### SEAN SSLUX61760

Oversized fedora in white panama, with a contrasting black leather and grosgrain band, mh logo



### SEAN SSLUX61760

Oversized fedora in grey panama, with a contrasting black leather and grosgrain band, mh logo



### WADE SSLUX61761

Trilby in black fishnet straw, black leather and grosgrain band, mh logo



### BAILEY SSLUX61766

Topper in a grey ramie straw, with a coral camouflage Liberty print bow-tie, mh logo



### HUDSON SSLUX61767

Oversized fedora in natural ramie straw, with a Liberty print bow-tie, mh logo



### VENICE SSLUX61768

Fedora in grey ramie straw, with a frayed denim grosgrain band, mh logo



### CASPIAN SSLUX61762

Large ring-top pork-pie hat in black ramie straw, with a black leather braid, mh logo



### MARSH SSLUX61763

Asymmetric fedora in natural jute straw, with a contrasting frayed denim grosgrain band, mh logo



### RIVER SSLUX61764

Tall fedora in black fishnet straw, with a cotton galloon braid, mh logo



### HAYDEN SSLUX61769

Topper in natural fishnet straw, with a black, gold and white braid, mh logo



### HAYDEN SSLUX61769

Topper in black fishnet straw, with a black and silver braid, mh logo



### ARNO SSLUX61770

Trilby in tan panama, with a black, gold and white braid, mh logo



### RIVER SSLUX61764

Tall fedora in natural fishnet straw, with a cotton galloon braid, mh logo



### ADRIAN SSLUX61765

Asymmetric top hat in black ramie straw, with a black leather braid, mh logo



### BAILEY SSLUX61766

Topper in sea green ramie straw, with a coral camouflage Liberty print bow-tie, mh logo



### DAMIAN SSLUX61771

Boater in black fishnet straw, with a black leather and grosgrain band, mh logo



### BLAKE SSLUX61772

Bowler in black ramie straw, with a black and silver braid, mh logo

## SS17 ESSENTIALS COLLECTION



**RACQUEL SS717001**

Asymmetric draped cap in black linen, with mh logo



**RACQUEL SS717001**

Asymmetric draped cap in a combination of Khaki linen and Liberty coral camo print, with mh logo



**RACQUEL SS717001**

Asymmetric draped cap in a combination of Navy linen and Liberty print, with mh logo



**LUCA SS717004**

Paper braid Fedora in off white, with reversible metallic leather band



**LUCA SS717004**

Paper braid fedora in off white and navy combination with reversible metallic leather band



**TILDA SS717002**

Foldable capeline hat in a combination of beige linen and Liberty print, with print scarf



**TILDA SS717002**

Foldable capeline hat in a combination of Khaki linen and Liberty coral camo print, with print scarf



**TILDA SS717002**

Foldable capeline hat in a combination of Navy linen and Liberty print, with print scarf



**MAYA SS717005**

Paper braid cappeline in a combination of off white and beige, with a reversible metallic leather band



**MAYA SS717005**

Paper braid cappeline in a combination of navy and beige, with a reversible metallic leather band



**ARTHUR SS717003**

Reversible work cap in navy linen and Liberty print, with mh logo



**ARTHUR SS717003**

Reversible work cap in khaki linen and Liberty coral camo print, with mh logo



**CAPRI SS717006**

Paper braid marine cap in beige, with a reversible metallic leather band



**CAPRI SS717006**

Paper braid marine cap in navy, with a reversible metallic leather band



MISA X KEEDA OIKAWA  
COLLABORATION



MISA X KEEDA SSKDA617001-A



**SSKDA617001-A**  
Asymmetric fedora in off white panama hand painted with multi colour flowers



**SSKDA617001-B**  
Asymmetric fedora in off white panama hand painted with feather motif



**SSKDA617001-C**  
Asymmetric fedora in off white panama hand painted with butterfly motif



**SSKDA617001-D**  
Asymmetric fedora in off white panama hand painted as blue and black coral reef



**SSKDA617002-E**  
Asymmetric fedora in black panama hand painted with feather motif



**SSKDA617002-F**  
Asymmetric fedora in black panama hand painted with orange tropical flower



**SSKDA617002-G**  
Asymmetric fedora in black panama hand painted as under water world



**SSKDA617002-H**  
Asymmetric fedora in black panama hand painted as a bird of paradise



**CORSAGE**  
Individually hand painted flowers in raffia

**MISA HARADA LONDON**

Headquarters:  
Misa Harada Millinery Ltd

16 North Road  
Cardiff  
CF10 3DY  
U.K

T: +44 29 21 32 9546

Sales Enquiries:  
sales@misaharada.com

Press Enquiries:  
pr@misaharada.com

**Japan Sales enquiries:**

Talk Co., Ltd.  
Room 502 Villa Serena  
2-33-18 Jingumae, Shibuya-ku  
Tokyo 150-0001  
Japan

T: +81 3 6434 7770  
F: +81 3 6434 7771

k.akiyama@talkhat.co.jp  
k.hibino@talkhat.co.jp

Press enquiries:  
REHEARSAL  
T: +81 90 3505 6827

hitomi@rehearsal.jp

[www.misaharada.com](http://www.misaharada.com)

Photography: Michael Blann



CASCADE SSLUX71727

The background of the entire image is a light-colored, marbled pattern with soft, greyish veins and swirls, resembling natural stone or paper.

misaharada  
london

[www.misaharada.com](http://www.misaharada.com)